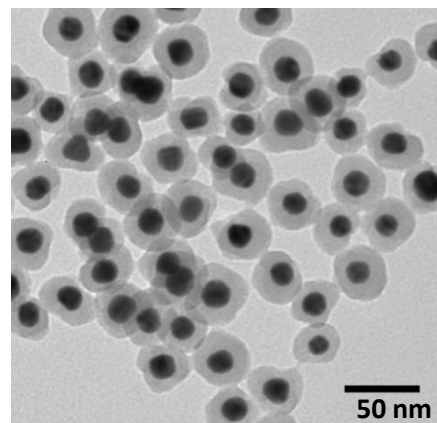
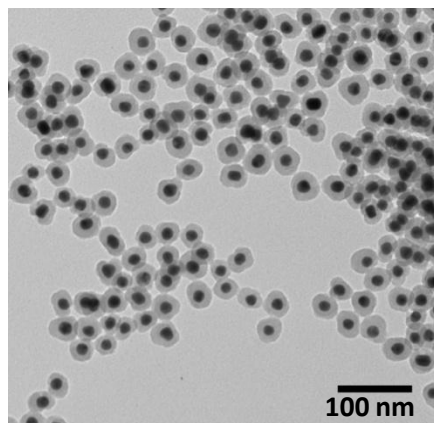
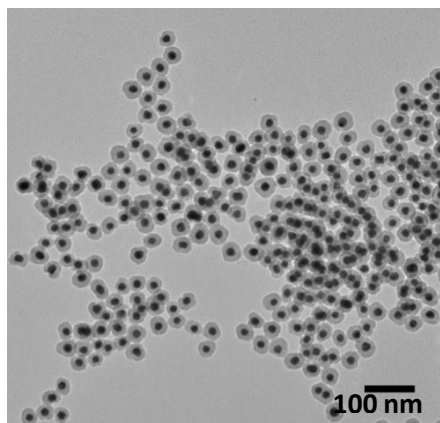


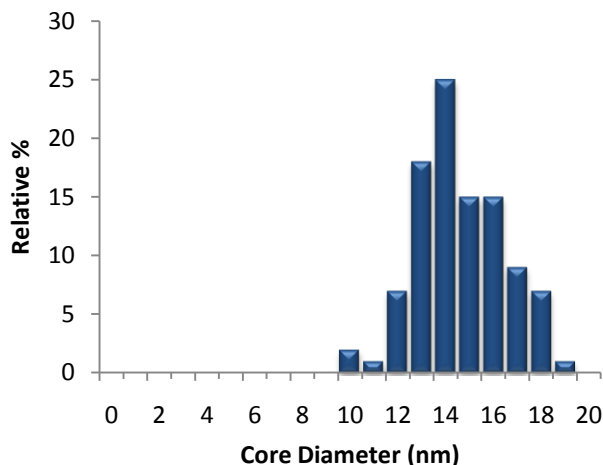
# 17nm Silica Shelled Gold MALDI Matrix

Lot Number: EAW1148

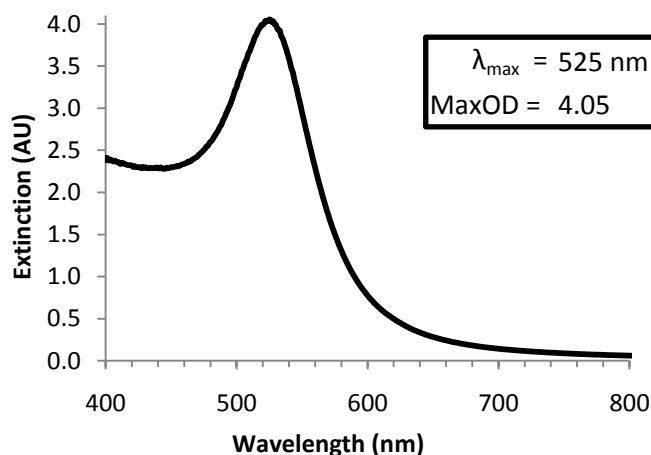
<b>Gold Diameter (TEM)</b>	14.1 nm	<b>Hydrodynamic Diameter:</b>	52.5 nm
<b>Coefficient of Variation Au</b>	12.8 %	<b>Zeta Potential:</b>	24.0 mV
<b>Silica Shell Thickness (TEM)</b>	18.0 nm	<b>pH of Solution:</b>	5.0
<b>Mass Concentration</b>	0.2 mg/mL	<b>Particle Surface</b>	Silica
<b>Particle Concentration</b>	7.1E+12 particles/mL	<b>Solvent:</b>	Milli-Q Water



## Size Distribution



## Optical Properties



### Characterization Instrumentation

<b>Diameter and Size Statistics:</b>	JEOL 1010 Transmission Electron Microscope
<b>Mass Concentration:</b>	Thermo Fisher X Series 2 ICP-MS
<b>Spectral Properties:</b>	Agilent 8453 UV-Visible Spectrometer
<b>Hydrodynamic Diameter/Zeta Potential:</b>	Malvern Zetasizer Nano ZS.

Storage and Handling: 4 °C away from light. DO NOT FREEZE.